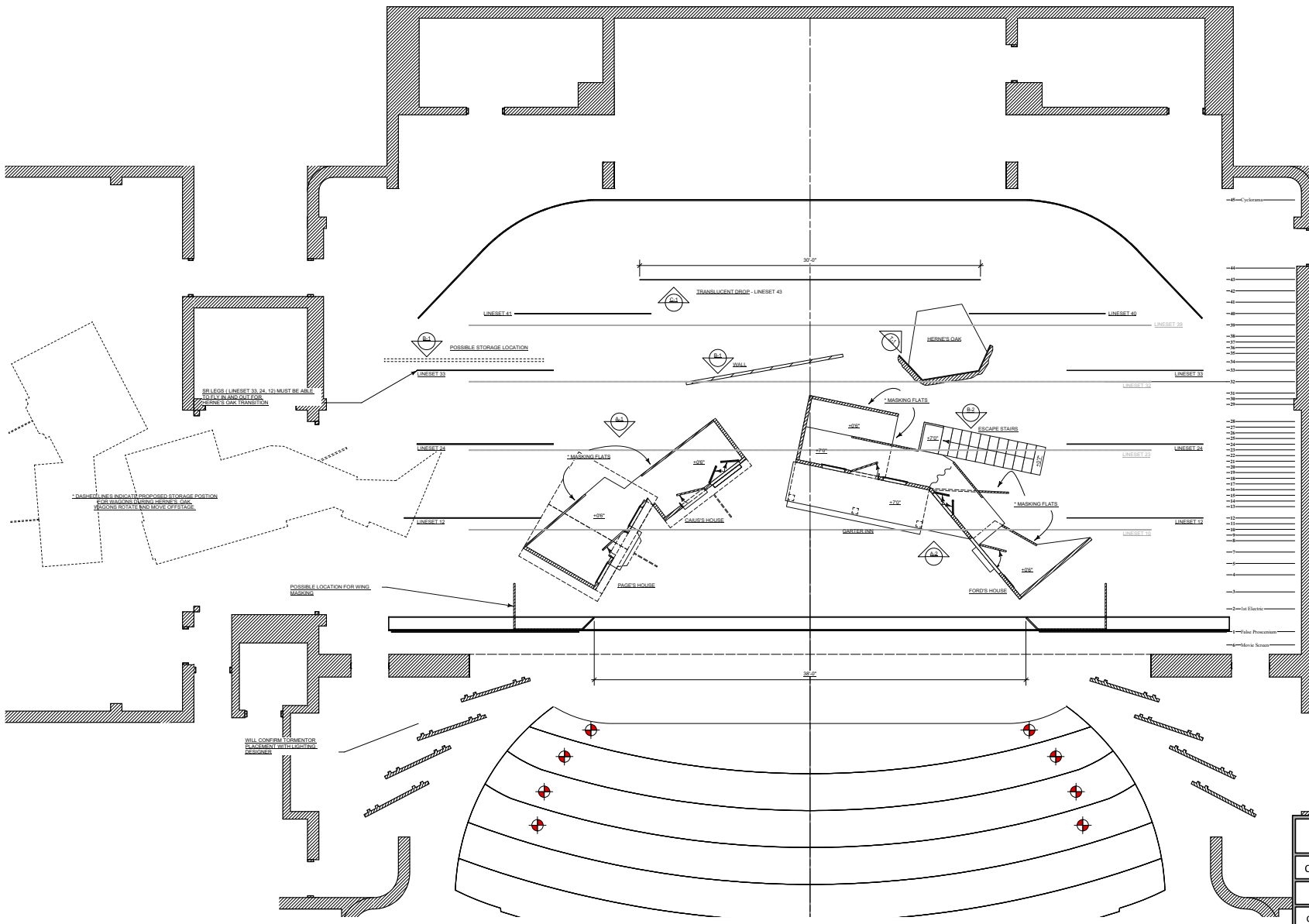


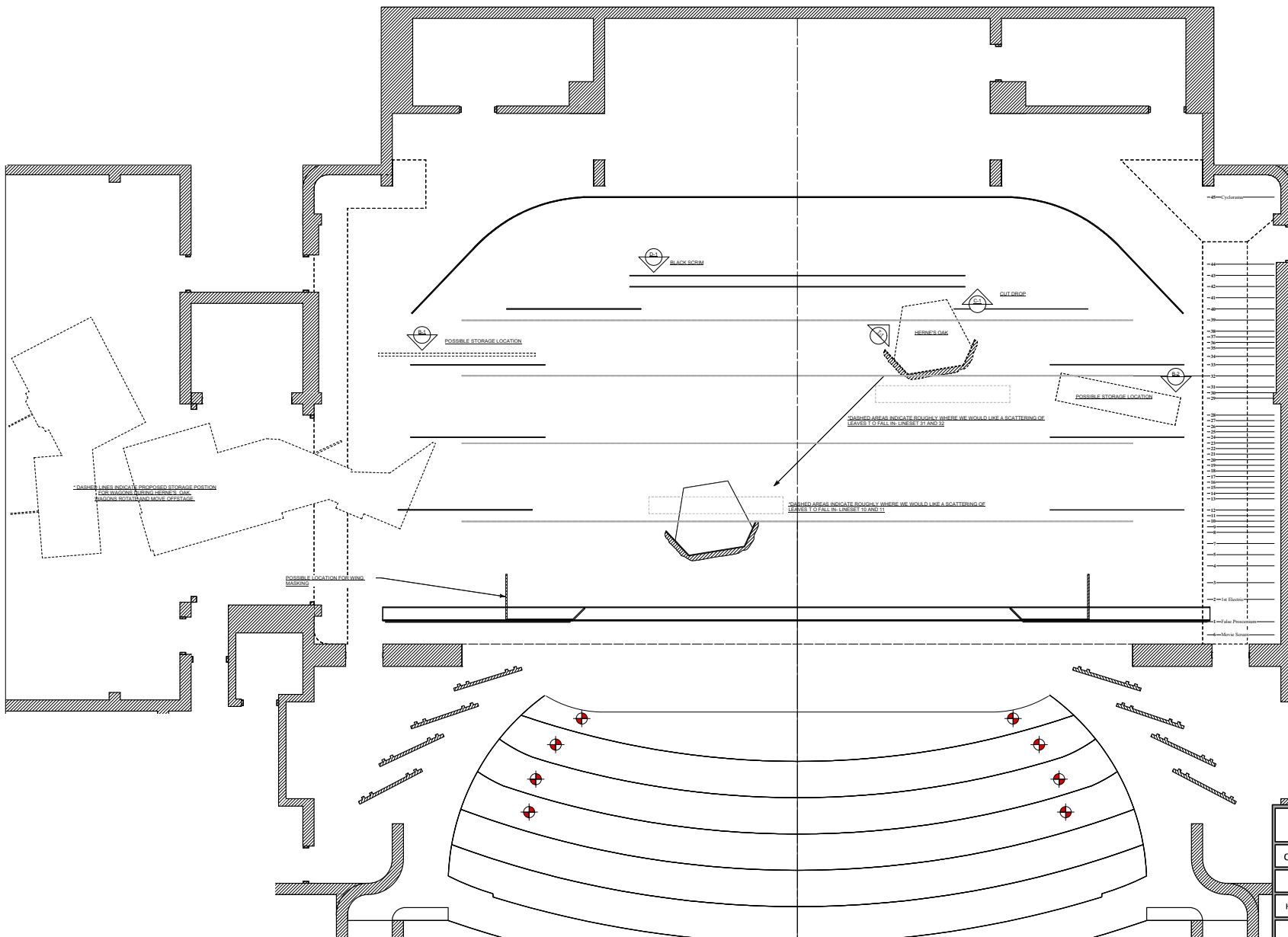
VECTORWORKS EDUCATIONAL VERSION



VECTORWORKS EDUCATIONAL VERSION

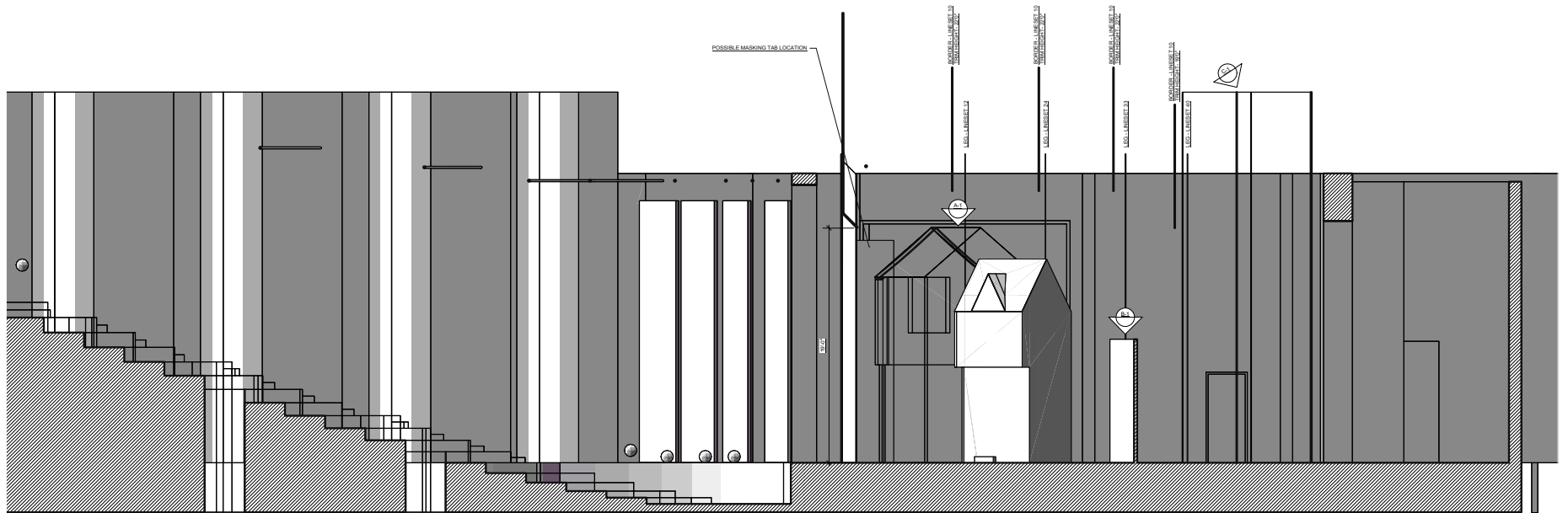
CLARENCE BROWN THEATRE COMPANY THE MERRY WIVES OF WINDSOR		1
CLARENCE BROWN MAINSTAGE THEATRE		
DIRECTED BY KATE BUCKLEY		OF 6
GROUNDPLAN	SCALE: 1/4"=1'0"	
SET DESIGN: KERRY LEE CHIPMAN KERRYLCHIPMAN@HOTMAIL.COM		
		12/15/10

VECTORWORKS EDUCATIONAL VERSION



VECTORWORKS EDUCATIONAL VERSION

CLARENCE BROWN THEATRE COMPANY THE MERRY WIVES OF WINDSOR	
CLARENCE BROWN MAINSTAGE THEATRE	
DIRECTED BY KATE BUCKLEY	
HERNE'S OAK SHIFT	SCALE: 1/4"=1'0"
SET DESIGN: KERRY LEE CHIPMAN KERRYLCCHIPMAN@HOTMAIL.COM	OF 6 12/15/10



CLARENCE BROWN THEATRE COMPANY THE MERRY WIVES OF WINDSOR	
CLARENCE BROWN MAINSTAGE THEATRE	3
DIRECTED BY KATE BUCKLEY	
SR CL SECTION SCALE: 1/4"=1'0"	
SET DESIGN: KERRY LEE CHIPMAN	OF 6
KERRYLCHIPMAN@HOTMAIL.COM	12/15/10

VECTORWORKS EDUCATIONAL VERSION

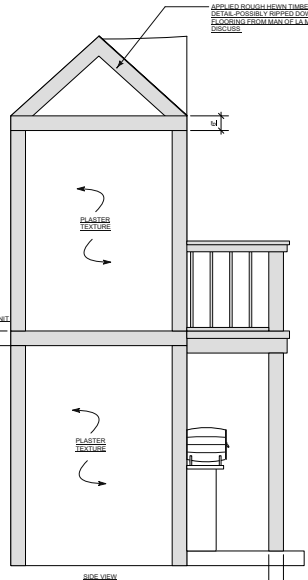
* ALL WINDOW PANES ARE VINYL (SEE SAMPLE IN PAINT AREA)

APPLY BROADHEAVY TIMBER
TEXTURE TO THE DOWN
FLOORING FROM MAIN TO A MANICURE
LEVEL

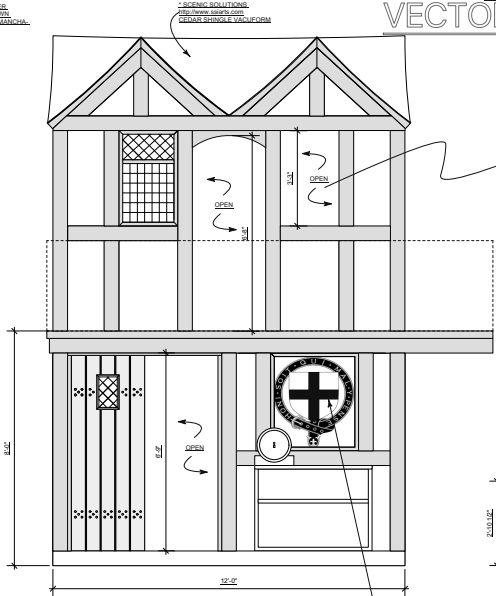
* SCENE SOLUTIONS
FOR WINDOW OPENING
REVEAL STRIPS & VERTICAL
DIMENSIONS

* SCENE SOLUTIONS
REVEAL WINDOW OPENING

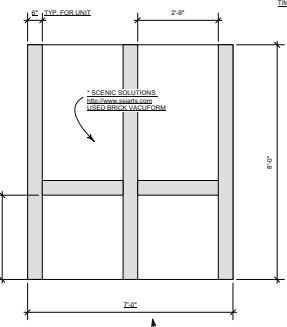
APPLY BROAD HEAVY TIMBER
TEXTURE TO THE DOWN FLOORING
FROM MAIN TO A MANICURE
LEVEL



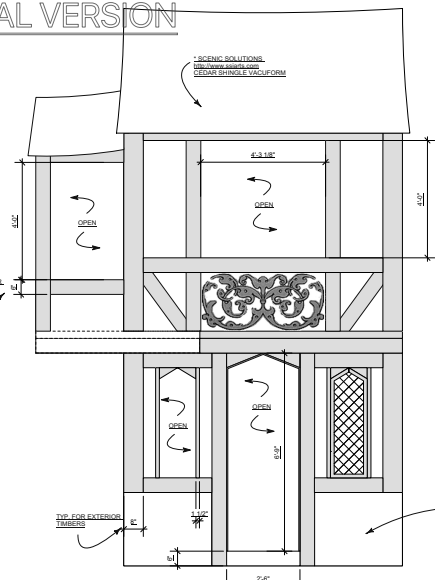
A-2 GARTER INN
SCALE: 1/2" = 1'0"



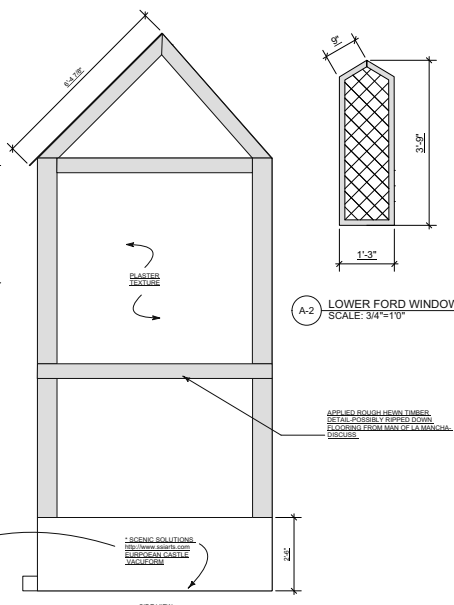
A-2 UPPER GARTER WINDOW
SCALE: 3/4" = 1'0"



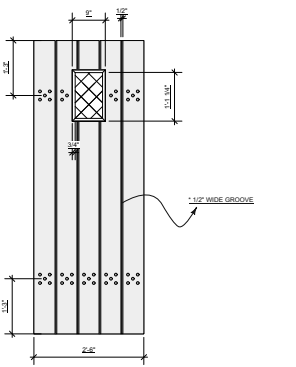
A-2 MASKING WALL
SCALE: 1/2" = 1'0"



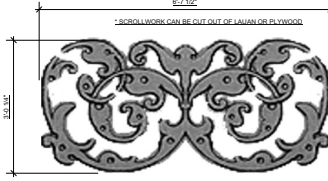
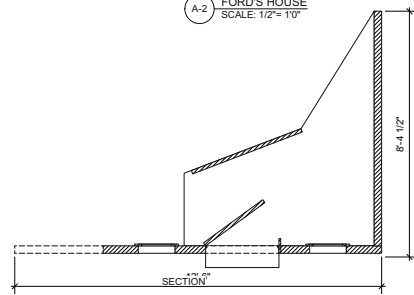
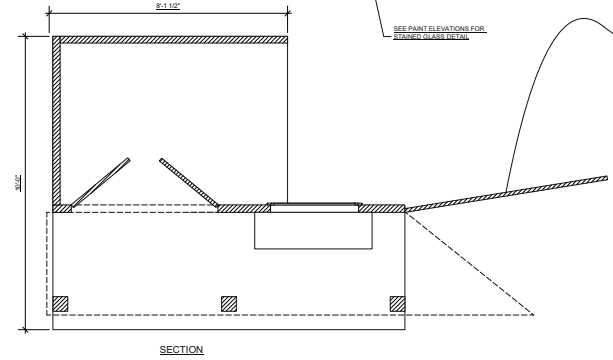
A-2 FORD'S HOUSE
SCALE: 1/2" = 1'0"



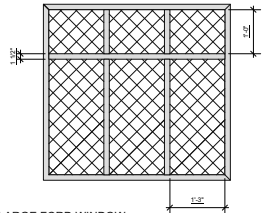
A-2 LOWER FORD WINDOW
SCALE: 3/4" = 1'0"



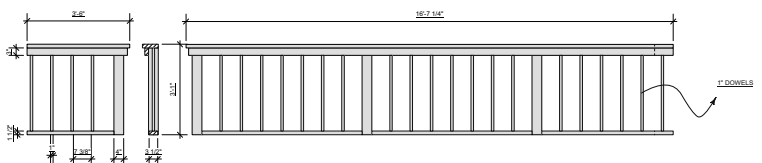
A-2 GARTER LOWER DOORS - REVERSE REPEAT
SCALE: 3/4" = 1'0"



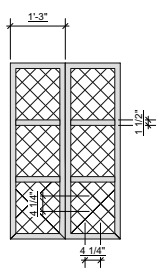
A-2 SCROLLWORK DETAIL
SCALE: 3/4" = 1'0"



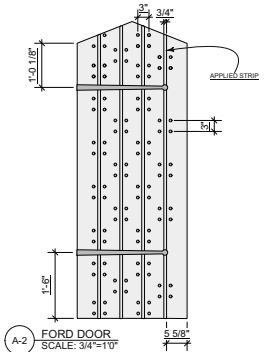
A-2 LARGE FORD WINDOW
SCALE: 3/4" = 1'0"



A-2 GARTER RAILING
SCALE: 3/4" = 1'0"



A-2 UPPER FORD WINDOW
SCALE: 3/4" = 1'0"

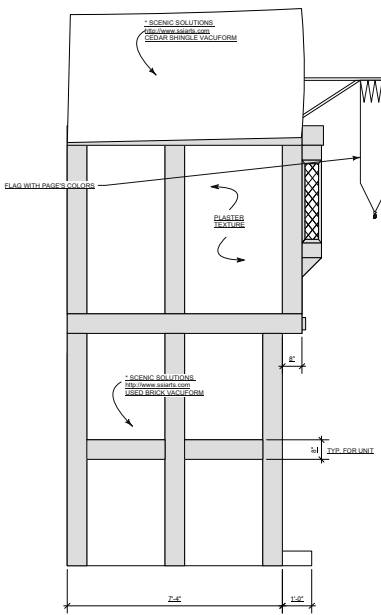


A-2 FORD DOOR
SCALE: 3/4" = 1'0"

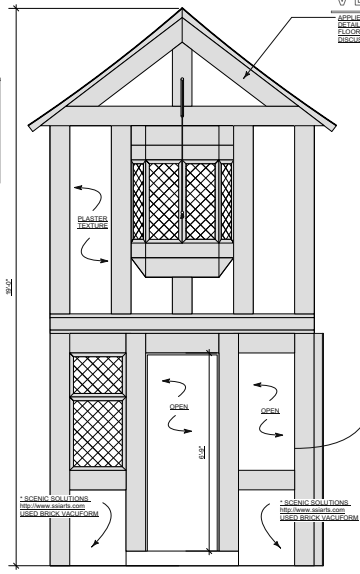
VECTORWORKS EDUCATIONAL VERSION

CLARENCE BROWN THEATRE COMPANY THE MERRY WIVES OF WINDSOR	
CLARENCE BROWN MAINSTAGE THEATRE	4
DIRECTED BY KATE BUCKLEY	
GARTER AND FORD DETAILS	SCALE: 1/4" = 1'0"
SET DESIGN: KERRY LEE CHIPMAN	OF 6
KERRY.LCHIPMAN@HOTMAIL.COM	12/15/10

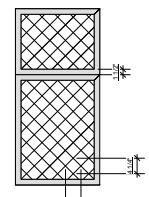
VECTORWORKS EDUCATIONAL VERSION



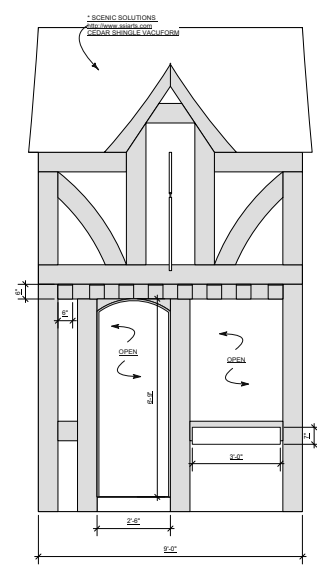
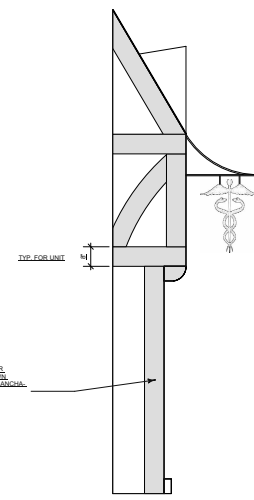
A-1 PAGE'S HOUSE SCALE: 1/2" = 1'0"



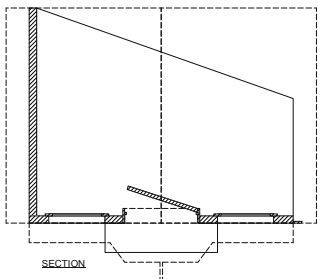
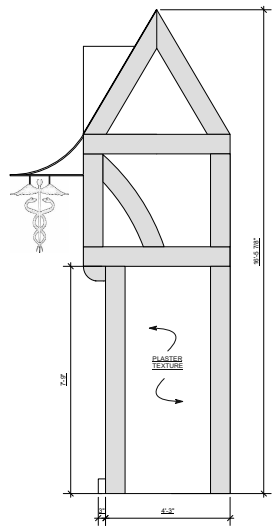
* ALL WINDOW PANES ARE VINYL (SEE SAMPLE IN PAINT AREA)



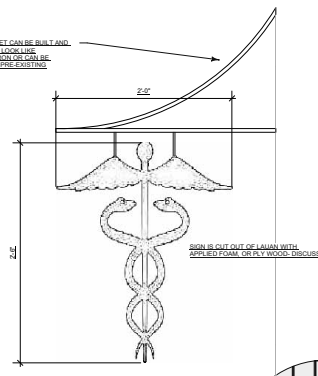
A-1 PAGE WINDOW SCALE: 3/4" = 1'0"



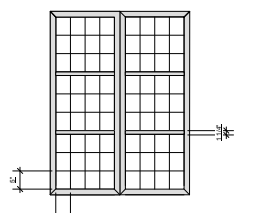
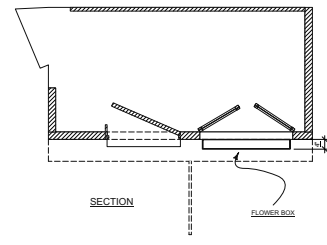
A-1 CAIUS HOUSE SCALE: 1/2" = 1'0"



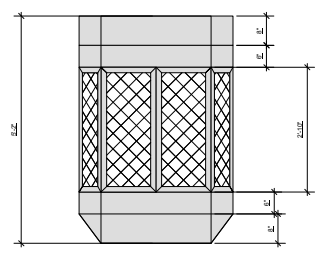
SIGN BRACKET CAN BE BUILT AND TREATED TO LOOK LIKE WINDOW FROM SCENE OR SOMETHING PRE-EXISTING



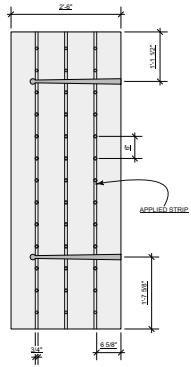
A-1 CAIUS SIGN SCALE: 1 1/2" = 1'0"



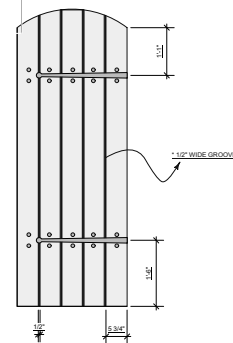
A-1 CAIUS WINDOW SCALE: 3/4" = 1'0"



A-1 PAGE UPPER WINDOW SCALE: 3/4" = 1'0"



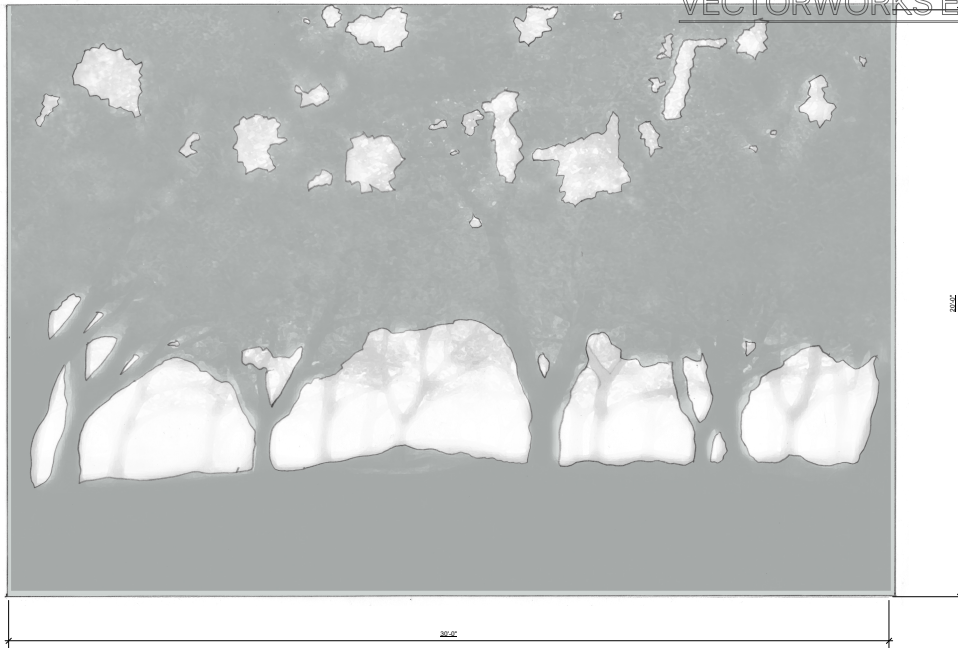
A-1 PAGE DOOR SCALE: 3/4" = 1'0"



A-1 CAIUS DOOR SCALE: 3/4" = 1'0"

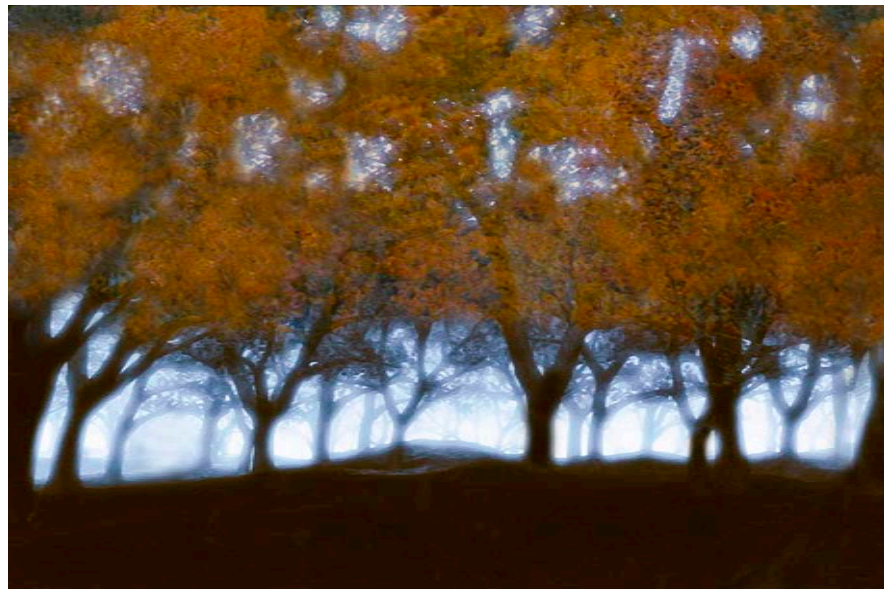
VECTORWORKS EDUCATIONAL VERSION

CLARENCE BROWN THEATRE COMPANY THE MERRY WIVES OF WINDSOR	
CLARENCE BROWN MAINSTAGE THEATRE	
DIRECTED BY KATE BUCKLEY	
PAGE AND CAIUS DETAILS	SCALE: 1/4" = 1'0"
SET DESIGN: KERRY LEE CHIPMAN	
KERRYLCIPMAN@HOTMAIL.COM	
5	OF 6
12/15/10	

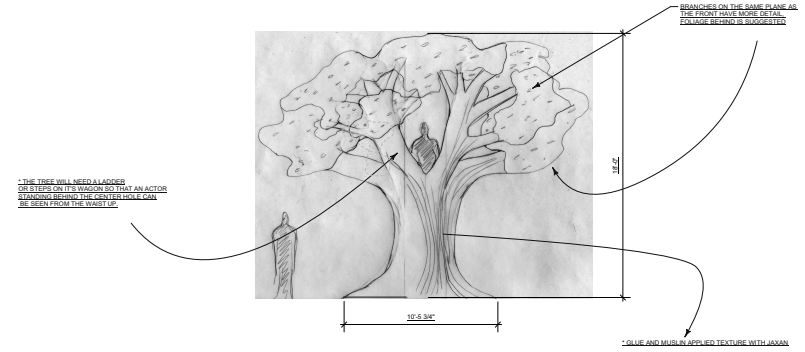


C-1 TRANSLUCENT DROP
SCALE: 1/2"=1'0"

*XS INDICATE AREAS THAT WOULD BE TRANSLUCENT



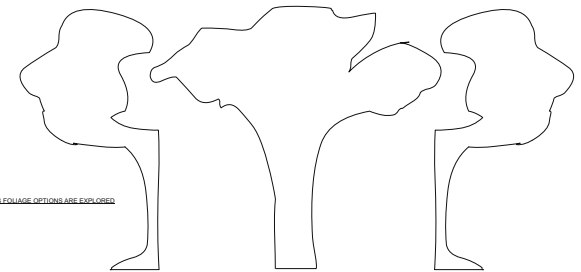
B-1 US WALL
SCALE: 1/2"=1'0"



* THE TREE WILL NEED LADDERS OR STREPPONS TO WAGON SO THAT AN ACTOR STANDING FROM THE CENTER OF THE WAGON CAN BE SEEN FROM THE WASH UP

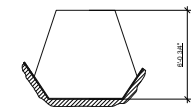
* BRANDES ON THE SAME PLANE AS THE FRONT HOLE TO PREVENT SHADOWS BEHIND IS SUGGESTED

* GLUE AND MUSLIN APPLIED TEXTURE WITH JAXAN

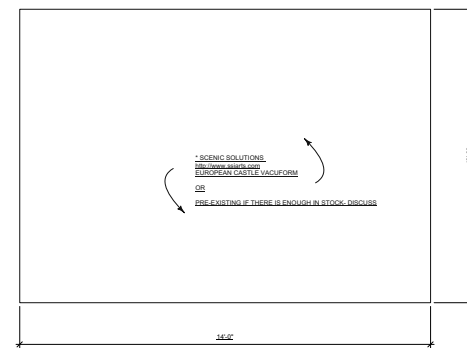


* SHAPES MAY VARY SLIGHTLY AS EQUIVALENTS ARE EMPLOYED

T-1 TREE
SCALE: 1/4"=1'0"



* TREE IS BUILT IN THREE SECTIONS AND 1/2" OF FOAM IS APPLIED TO CURVE AND APPLY TEXTURE (GLUE AND MUSLIN + JAXAN)



* SCENIC SOLUTIONS
BRITISH AND/OR EUROPEAN CASTLE VACUFORM
OR
PRE-EXISTING IF THERE IS ENOUGH IN STOCK, DISCUSS

CLARENCE BROWN THEATRE COMPANY THE MERRY WIVES OF WINDSOR	
CLARENCE BROWN MAINSTAGE THEATRE	6
DIRECTED BY KATE BUCKLEY	
CUT DROP AND TREE	SCALE: 1/4"=1'0"
SET DESIGN: KERRY LEE CHIPMAN KERRYLCHIPMAN@HOTMAIL.COM	OF 6 12/15/10